

Parking FAQ for the Ponderosa Center

Will parking be an issue once the Ponderosa Center is built?

The City of McCall has a comprehensive vision for its downtown area that includes several initiatives to ensure easy access to the Ponderosa Center and its surroundings:

- **Pedestrian-Friendly Spaces:** The city is focused on creating a walkable, bike-friendly environment with enhanced safety features for all visitors.
- **Multiple Parking Options:** There are over 250 public parking spaces within a 20-minute walking radius of the Ponderosa Center, as shown in the map below. This ensures ample parking for guests, especially since many are expected to carpool.
- **Free Shuttle Service (McCall Transit):** The city operates a free shuttle service, McCall Transit, which runs through downtown. This makes it easy for visitors to park in designated lots and take the shuttle to the Ponderosa Center.

What is the City of McCall's vision for parking in the downtown area?

The City of McCall envisions a pedestrian-friendly downtown core that encourages walking and biking around the lakefront. Multiple parking lots will be available throughout downtown, and the McCall Transit shuttle service will help reduce the need for parking directly near the lake and the Ponderosa Center.

Where can I park when visiting the Ponderosa Center?

Guests can find over 250 public parking spaces within a 20-minute walking radius of the Ponderosa Center. These parking lots are conveniently located near:

- **Legacy Park** (west of the Center)
- **Veteran's Park** (south of the Center)
- **McCall City Hall and Police Department** (further south on N 1st St)
- **Additional lots** along E Park St and surrounding areas

How can I reach the Ponderosa Center from parking lots?

Visitors can utilize the McCall Transit shuttle service (marked in red on the map) for convenient transportation from public lots to the Ponderosa Center. Additionally, the City is working to improve connector paths and sidewalks to enhance accessibility for walking and biking.

Will McCall Transit be available during Ponderosa Center events?

Yes, the McCall Transit shuttle will operate during Ponderosa Center events, allowing visitors to park in nearby lots and be shuttled directly to the Center. This service will help manage parking demand and traffic flow during high-attendance events.

How has parking been managed during previous events?

Over the past four years, the Ponderosa Center's summer evening events have attracted over 400 guests each time, with no parking complaints reported by either the local police department or the Ponderosa Center team. This

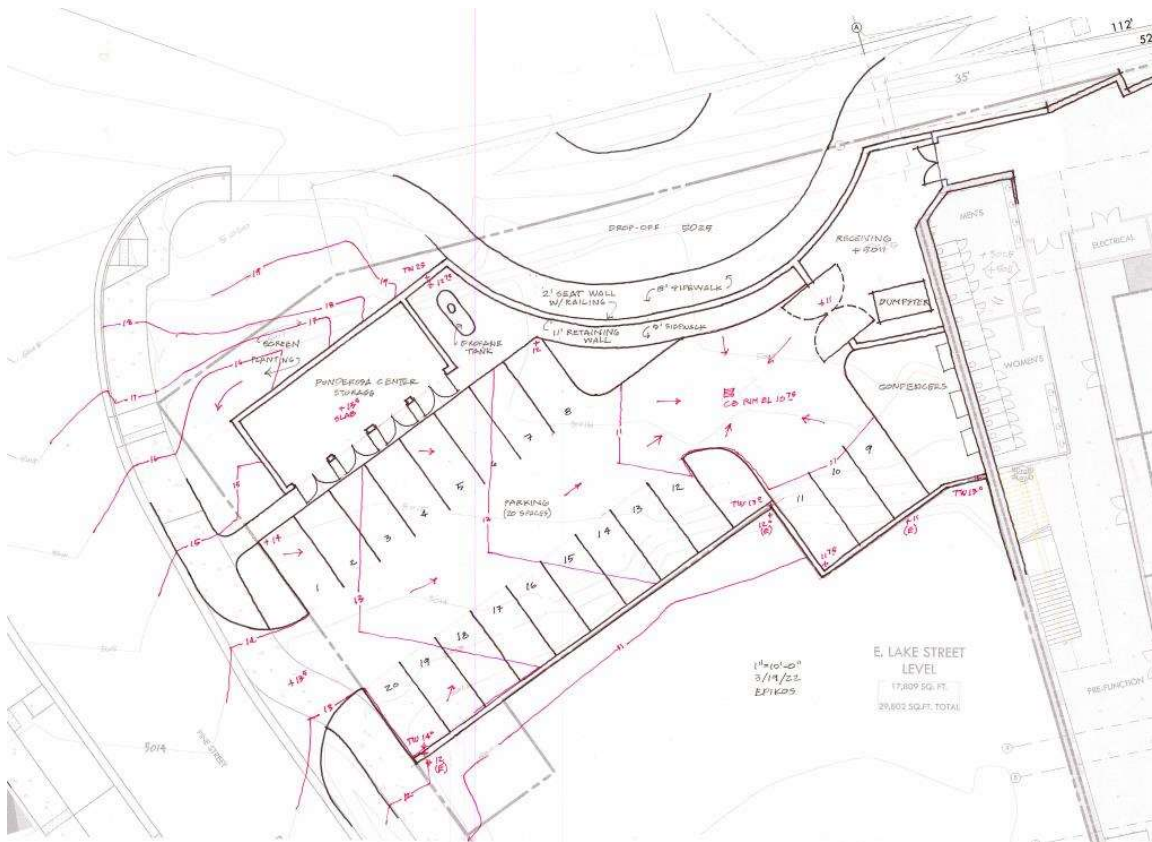
demonstrates that the existing parking infrastructure, supported by McCall Transit and pedestrian-friendly improvements, has effectively met the needs of large events.

How will parking improvements impact the community and visitors?

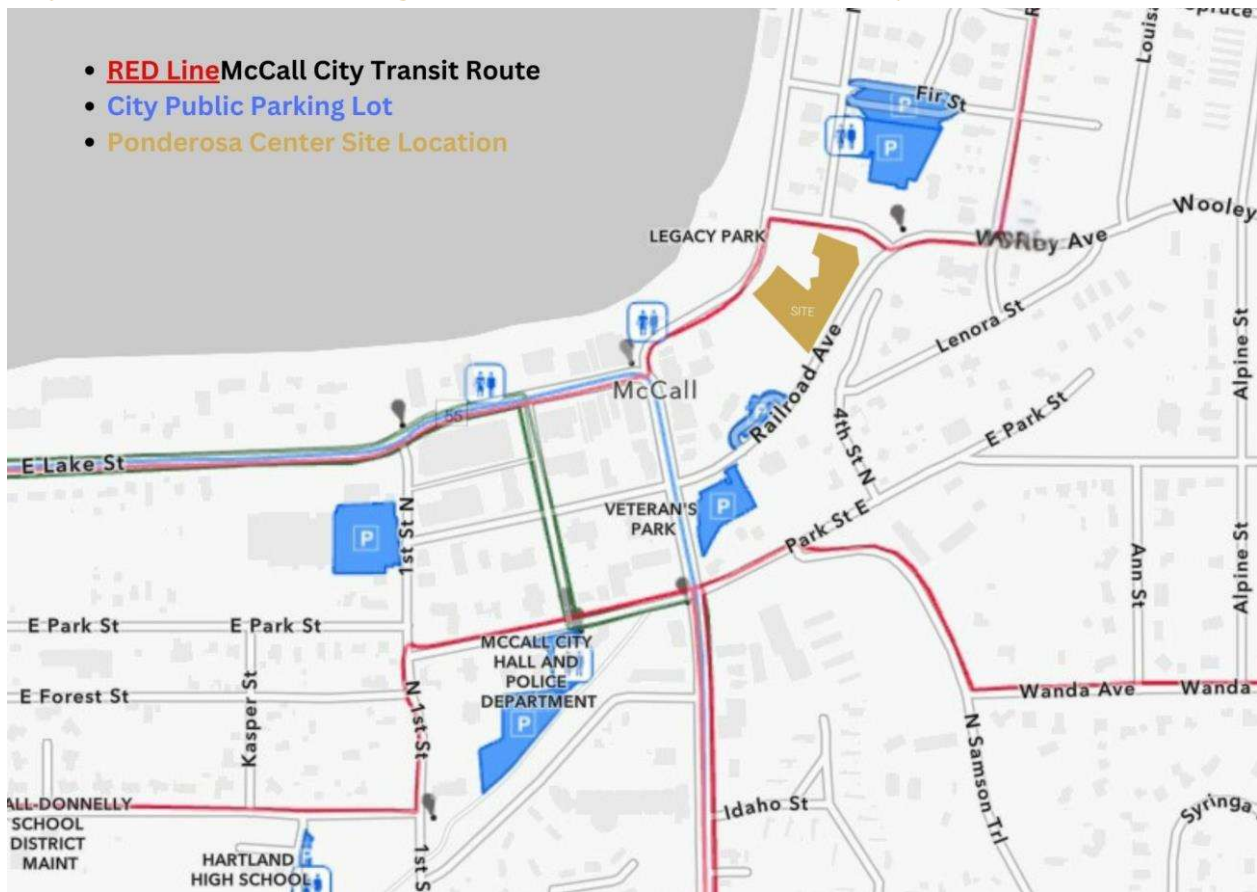
Ongoing enhancements to wayfinding signage, connector paths, and sidewalks will simplify the process for visitors to locate parking lots and access the Ponderosa Center. These improvements contribute to a safer, more vibrant downtown area, encouraging public gatherings, cultural events, and better access to the lakeshore. Additionally, local area hotels have shuttle services for their guests that can be used for accessing the Ponderosa Center.

Will the Ponderosa Center have any parking available on-site?

Yes, we will have 25 parking spaces available and a drop-off/pick-up loop in front of the building. The parking rendering map is provided below.

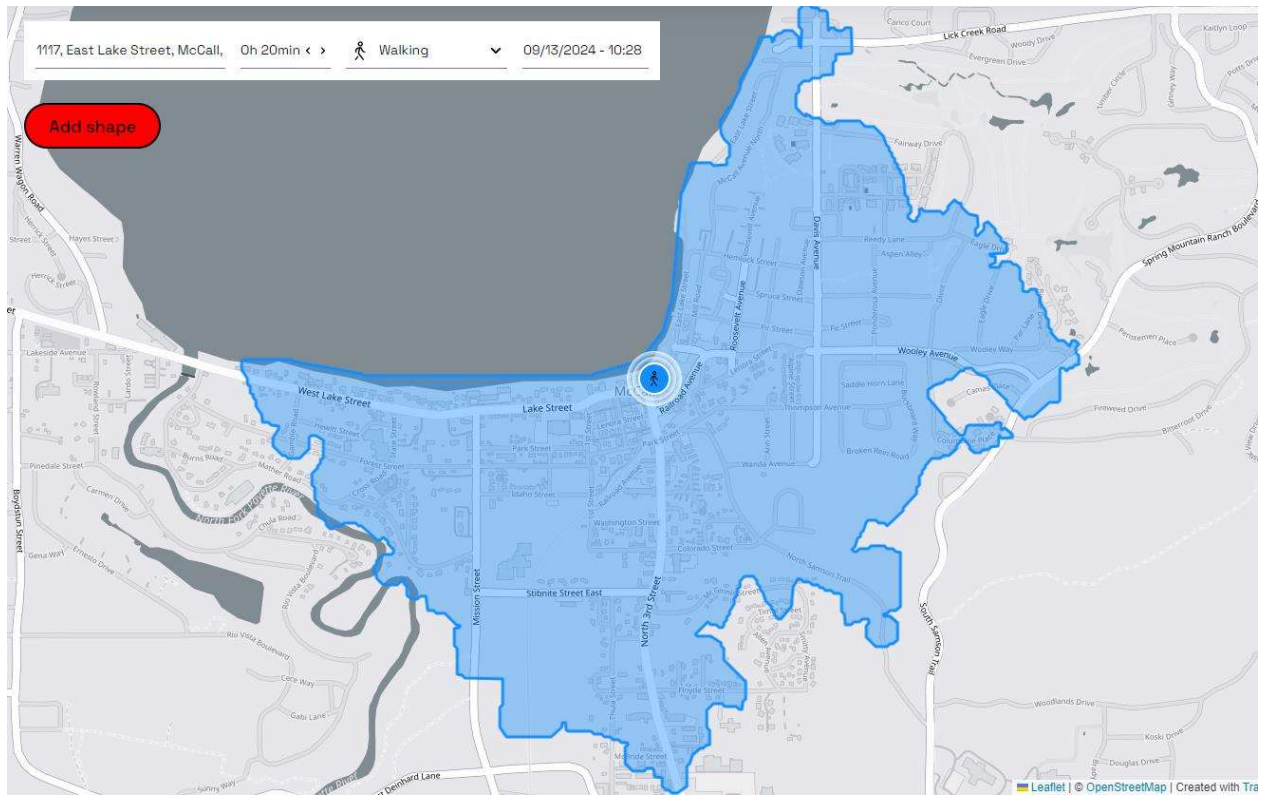


City of McCall Public Parking Lots & McCall Transit Shuttle Map



Map showing the McCall Transit shuttle routes in relation to the Ponderosa Center. Additional conversations are being made with McCall Transit to have the "RED LINE" route include a pick-up/drop off stop at the Ponderosa Center once the building is constructed.

City of McCall Parking Availability Map:



Map indicating available parking spaces within a 20-minute walking radius of the Ponderosa Center.